

ESCOSTART Soft Starter

Solstart – Analogue Miniature Soft Starter

Subject to technical changes. Document ID number: 06a22053



Standard Features

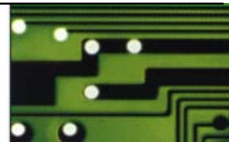
- Built-in Bypass
- Ramp-up
- Ramp-down
- Initial Voltage
- Up to 60 Starts/h
- Control via Contacts
- LED indication:
3 Status LEDs
- Settings:
3 Potentiometers for:
INITIAL VOLTAGE
ACCELERATION TIME
DECELERATION TIME
- DIN Rail Mounting:
standard with Solstart 8-22A

ESCOSTART Softstarter



EUGEN SCHMIDT UND CO
ANTRIEBSTECHNIK





Solstart – Soft Starter

ESCOSTART Soft Starter

Specifications

Type Solstart...	8	17	22	31	44	58
Rated Output Current (A)	8	17	22	31	44	58
Rated Motor Power (kW) at 400V	4	7.5	11	15	22	30
Dimensions	A	B		C		
Width (mm)	45	90	90	65	65	65
Height (mm)	75	75	75	190	190	190
Depth (mm)	105	105	105	114	114	114
Weight [kg]	0.42	0.55	0.65	1.3	1.3	1.3
Protection	IP 20					
Supply Voltage	3 x 380 ... 440V, -15% ... +10%; 50/60Hz ± 4%; special voltage on request					
Control Connections	switching contacts					
Max. Starts/h	up to 60 starts/h at reduced load					
Acceleration Time	0.2 ... 5s					
Deceleration Time	0.2 ... 5s					
Initial Voltage	0 ... 80% of supply voltage					
LED Indication	3 status LEDs: OPERATION, RAMP-UP, RAMP-DOWN, END OF RAMP					
Settings	3 potentiometers: INITIAL VOLTAGE, ACCELERATION TIME, DECELERATION TIME					
Mounting	DIN rail mounting with Solstart 8 – 22A					
Ambient Air Temperature	operation: 0 °C ... +40 °C storage: -20 °C ... +70 °C					
Calorific Loss	= 0.5 · rated current [Watt]			(bypass built-in)		
Conformity	CE (on request: UL, cUL, etc.)					



EUGEN SCHMIDT UND CO
ANTRIEBSTECHNIK