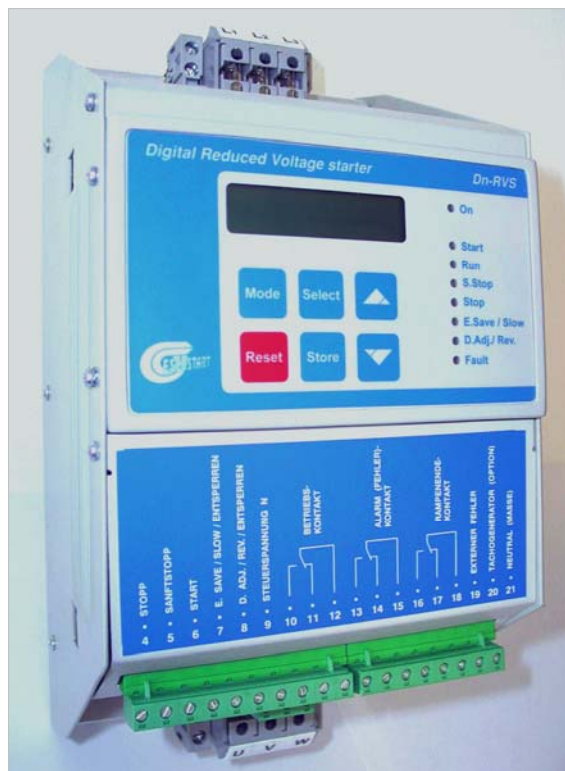




ESCOSTART Soft Starter

# RVS-DN – Digital Soft Starter

Subject to technical changes. Document ID number: 06a22051



## Standard Features

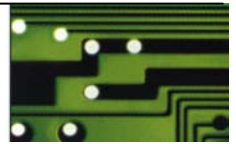
- Ramp-up
- Ramp-down
- Current Limit
- Full Bridge (6 Thyristors)
- Acceleration/Deceleration Characteristic for Pumps
- Energy Save Function
- Electronic Motor Protection
- 2. Set of Parameters
- Slow Speed With Electronic Reversing
- Digital, Alphanumeric 4-language LCD Display
- Programmable I/Os
- Operation Visualization by 8 LEDs
- 3 Relays:
  - Operation
  - End of Ramp
  - Fault

ESCOSTART Soft Starter



**EUGEN SCHMIDT UND CO**  
ANTRIEBSTECHNIK





# RVS-DN – Soft Starter

ESCOSTART Soft Starter

## Specifications

Type DN-RVS...	8	17	31	44	58	72	105	145	170	210	310	390	460	580	820	
Rated Output Current (A)	8	17	31	44	58	72	105	145	170	210	310	390	460	580	820	
Rated Motor Power (kW) at 400 V	4	7,5	15	22	30	37	55	75	90	110	160	200	250	315	450	
Dimensions	A				B				C				D			
Width (mm)	153		153		153		274		590				623			
Height (mm)	310		310		310		385		500				660			
Depth (mm)	170		217		217		279		292				290			
Weight (kg)	4.5		6.8		7.5		15		31				65			
Protection	IP 20						IP 00									
Supply Voltage	3 x 380 ... 440V, -15 ... +10 %; 50/60Hz ± 4 %, special voltage on request															
Control Connections	switching contacts															
Current Limit	100 ... 400% of rated motor current															
Max. Starts/h	4 starts/h at maximum load; up to 60 starts/h at reduced load															
Acceleration Time	1 ... 30s															
Deceleration Time	1 ... 30s															
Initial Voltage	10 ... 50% of supply voltage															
Protective Function LED Indication	electronic overload tripping, phase loss detection, overtemperature															
Relay Output	3 relays: operation, fault indication, end of acceleration (1S 8A, 250V AC)															
Ambient Air Temperature	-10 °C ... +50 °C															
Conformity	CE, UL, cUL, Loyd's, GL (on request: GOST, CCC, Rina, etc.)															



**EUGEN SCHMIDT UND CO**  
**ANTRIEBSTECHNIK**