

ESCOSTART Soft Starter

RVS-AX – Analogue Soft Starter

Subject to technical changes. Document ID number: 06a22052



Standard Features

- Built-in Bypass
- Full Bridge (6 Thyristors)
- Ramp-up
- Ramp-down
- Current Limitation
- Electronic Motor Protection
- Phase Loss Detection
- Overtemperature Detection
- Operation Visualization by 6 LEDs
- 2 Relays:
 - Fault Indication
 - End of Acceleration

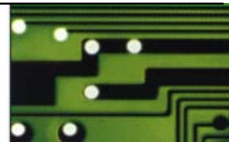
ESCOSTART Soft Starter



esco

EUGEN SCHMIDT UND CO
ANTRIEBSTECHNIK





RVS-AX – Anlagoue Soft Starter

ESCOSTART Soft Starter

Specifications

| | | | | | | | | | | | |
|---------------------------------------|---|-----|-----|-----|-------|--------------------|-----|-------|------|-------|--|
| Type RVS-AX... | 8 | 17 | 31 | 44 | 58 | 72 | 85 | 105 | 145 | 170 | |
| Rated Output Current (A) | 8 | 17 | 31 | 44 | 58 | 72 | 85 | 105 | 145 | 170 | |
| Rated Motor Power (kW) at 400 V | 4 | 7.5 | 15 | 22 | 30 | 37 | 45 | 55 | 75 | 90 | |
| Dimensions | A1 | | | A2 | | | A3 | | A4 | | |
| Width (mm) | 120 | 120 | 120 | 120 | 120 | 129 | 129 | | 172 | | |
| Height (mm) | 232 | 232 | 232 | 232 | 232 | 380 | 380 | | 340 | | |
| Depth (mm) | 102 | 102 | 102 | 102 | 102 | 182 | 182 | | 210 | | |
| Weight (kg) | 2.6 | 2.6 | 2.6 | 2.7 | 2.7 | 9.5 | 9.5 | | 12.1 | | |
| Protection | IP 20 | | | | IP 00 | | | IP 00 | | IP 00 | |
| Power Connections | terminals 16mm ² | | | | | busbars 4mm x 20mm | | | | | |
| Control Connections | switching contacts, terminals 1.5mm ² | | | | | | | | | | |
| Supply Voltage | 3 x 380 ... 440V , -15...+10%; 50/60Hz ± 4%, special voltage on request | | | | | | | | | | |
| Current Limit | 100 ... 400% of rated motor current | | | | | | | | | | |
| Max. Starts/h | 4 starts/h at maximum load; up to 60 starts/h at reduced load | | | | | | | | | | |
| Acceleration Time | 2 ... 30s | | | | | | | | | | |
| Deceleration Time | 2 ... 30s | | | | | | | | | | |
| Initial Voltage | 10 ... 50% of supply voltage | | | | | | | | | | |
| Protective Function LED indication | electronic overload tripping, phase loss detection, overtemperature | | | | | | | | | | |
| Relay Output | 2 relays: fault indication, end of acceleration (1S 8A, 250V AC) | | | | | | | | | | |
| Ambient Air Temperature | -10 ... +40 °C | | | | | | | | | | |
| Calorific Loss | = 0.5 · rated current [Watt] | | | | | (bypass built-in) | | | | | |
| Conformity | CE (on request: UL, cUL, etc.) | | | | | | | | | | |



EUGEN SCHMIDT UND CO
ANTRIEBSTECHNIK